



Burlington Road, London, W4 4BG

Guide Price £495,000

WHITMAN & CO.

SALES · LETTINGS · COMMERCIAL

- Top floor apartment
- Over 600 sqft
- Off-street parking

- Fantastic transport links
- Tree-lined residential road
- No onward chain

Tenure - Leasehold with Share of Freehold
 Lease length - 986 Years remaining
 Ground rent - Peppercorn
 Service charge- £193 pa + 25% of outgoings
 Local authority - Hounslow
 Council tax - Band D

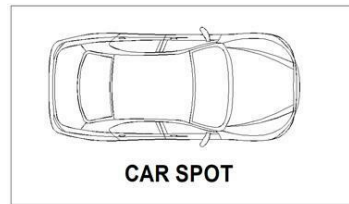
THE PROPERTY

A light and spacious (602 sqft) top-floor apartment with far-reaching views and off-street parking located within a 2-minute walk of Gunnersbury station and Chiswick High Road. Situated on this wide tree-lined residential road the property forms part of an imposing semi-detached Victorian townhouse with the accommodation comprising a 14'7" reception room, double bedroom with fitted wardrobes, fitted kitchen, bathroom and allocated off-street parking. Burlington Road runs south off Chiswick High Road and is moments from shops, cafes, restaurants and Chiswick Business Park. Transport links include Gunnersbury station (2-minute walk), local bus routes and easy access to the A4/M4 for routes in and out of London. No onward chain.

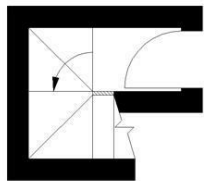
SITUATION



Key :
CH - Ceiling Height



Ground Floor
(Not shown in actual location / orientation)



First Floor Entrance

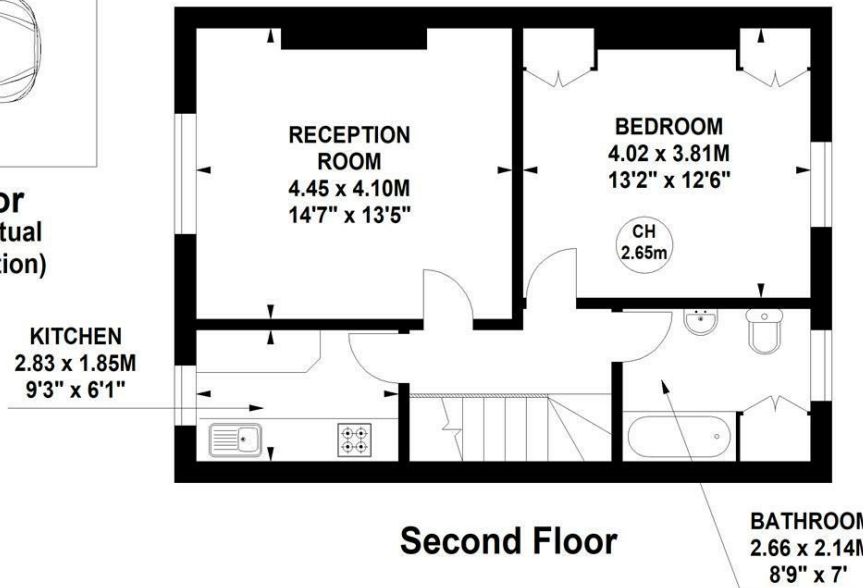
Burlington Road, Chiswick, W4

Approximate gross internal area

55.93 sq m / 602 sq ft



N



Not to scale, for guidance only and must not be relied upon as a statement of fact.
 All measurements and areas are approximate only

5-7 Turnham Green Terrace, Chiswick, London, W4 1RG

Tel 020 8747 8800

E-mail sales@whitmanandco.com

Website www.whitmanandco.com